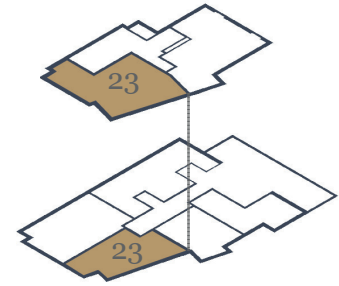




# APARTMENT 23

FORTH & FIFTH FLOOR



**60.2 sq m (648 sq ft)**

**LIVING ROOM**

2.94m x 3.98m (9'8" x 13'0.7")

**KITCHEN**

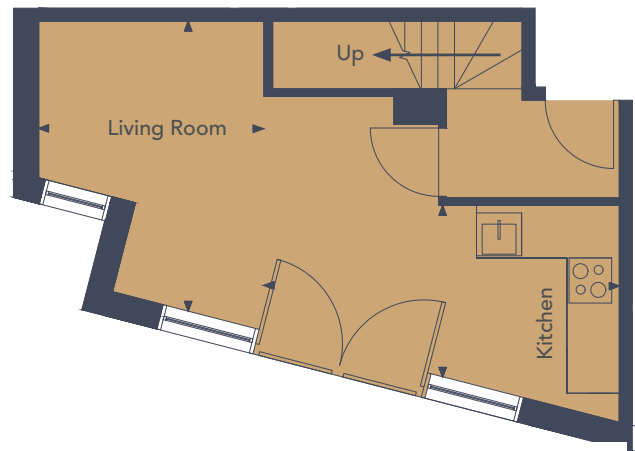
4.81m x 2.24m (15'9" X 7'4")

**BEDROOM**

6.76m x 3.25m (22'2" X 10'8")

**TERRACE**

4.65m x 0.87m (15'3" X 2'10")



**DUPLEX ONE BEDROOM**

The duplex one bedroom apartment combines living space with an open plan design, separate bedroom. This apartment has the added benefit of a balcony



◀▶ Measurement points



Floorplans provide approximate measurements only and furniture layouts are indicative. Dimensions, which are taken from the indicated points of measurements are for guidance only and are not intended to be used to calculate carpet sizes, appliance space or items of furniture. Dimensions are provided as gross internal areas and are subject to a variance of +/- 5%. Floor-plan issue date: 08/05/2019

**ADVANCE SALES INFORMATION - PLEASE NOTE THE DETAILS CONTAINED HERE MAY CHANGE.**