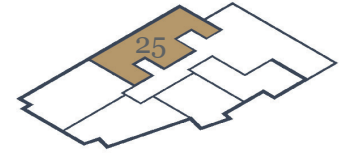




APARTMENT 25

FORTH FLOOR



APARTMENT 25

FORTH FLOOR



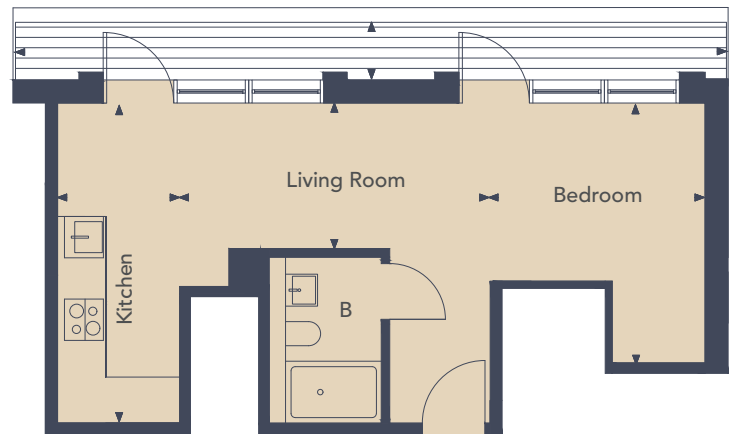
36.27 sq m (390 sq ft)

LIVING ROOM
4.55m x 2.12m (14'1" x 6'1")

KITCHEN
4.69m x 1.80m (15'5" x 5'1")

BEDROOM
3.83m x 3.78m (12'7" x 12'5")

TERRACE
10.32m x 0.81m (33'1" x 2'88")



MANHATTAN STUDIO

The Manhattan studio combines open plan living and sleeping spaces with a fully fitted kitchen and a separate shower room. Some of the apartments have the added benefit of a balcony.

◀ ▶ Measurement points



Floorplans provide approximate measurements only and furniture layouts are indicative. Dimensions, which are taken from the indicated points of measurements are for guidance only and are not intended to be used to calculate carpet sizes, appliance space or items of furniture. Dimensions are provided as gross internal areas and are subject to a variance of +/- 5%. Floor-plan issue date: 08/05/2019

ADVANCE SALES INFORMATION - PLEASE NOTE THE DETAILS CONTAINED HERE MAY CHANGE.